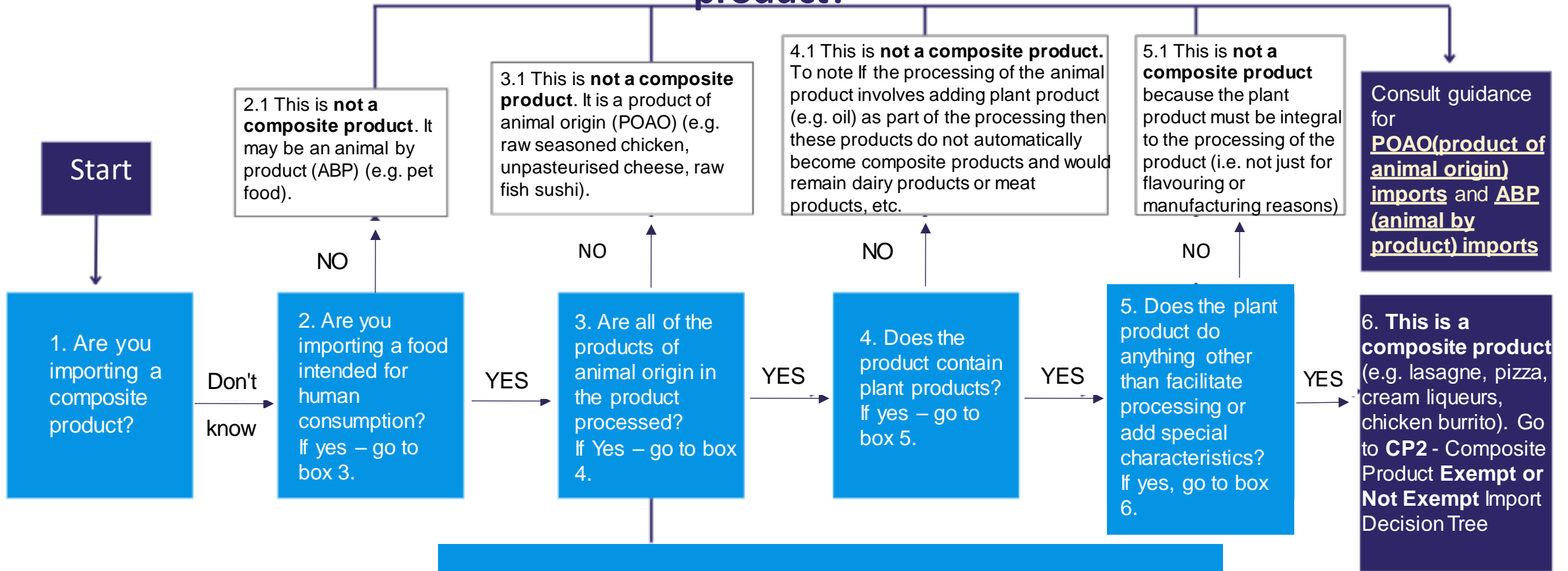




IMPORTANT: This should be used for EU-GB imports only. Different rules apply for GB-EU exports.

Decision Tree 1: Is your product a composite product?

Note: An importer must follow the decision tree from beginning to end to understand the full import requirements for their product.



This decision tree is for information only and has no legal value. Always check the legislation carefully before you import a product and if still unsure, check with the Port Health Authority or Local Authority at the port of entry you will be using.

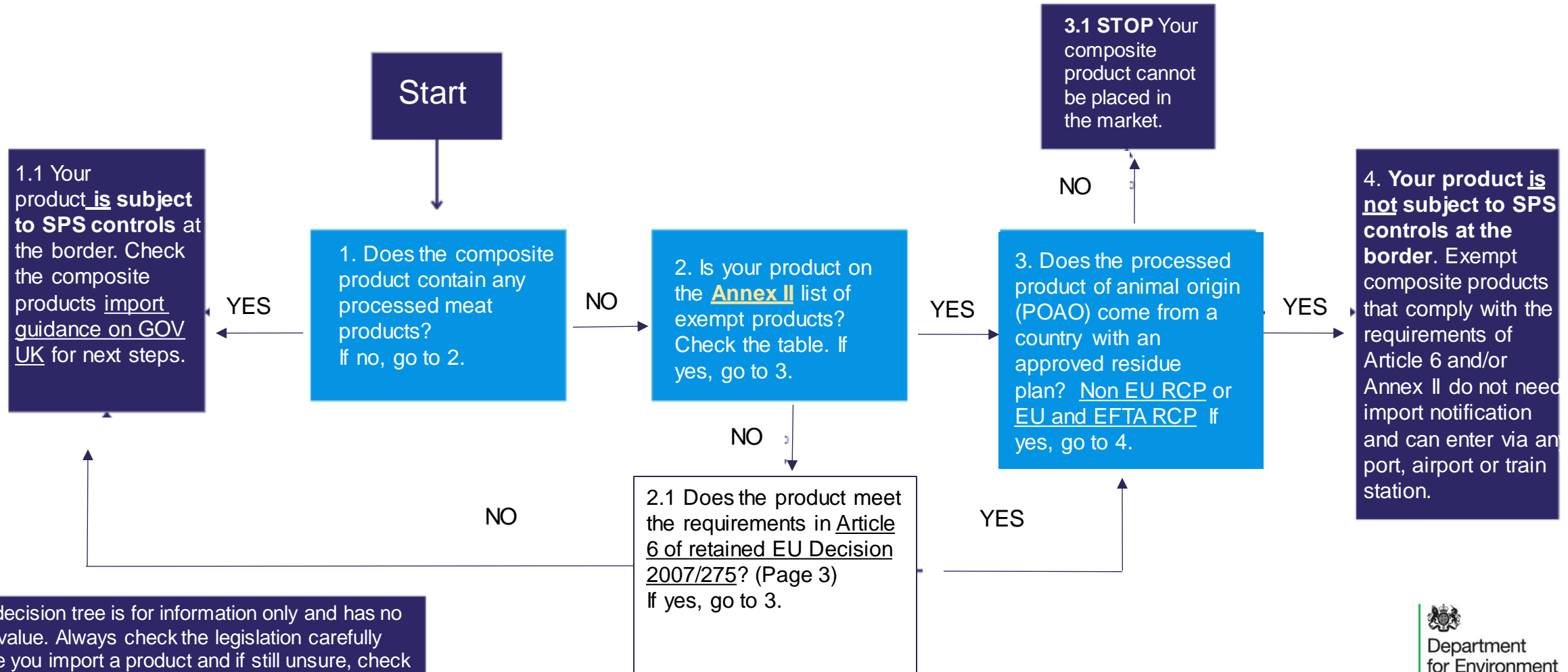
3.2 'Processing' means any action that substantially alters the initial product, including heating, smoking, curing, maturing, drying, marinating, extraction, extrusion or a combination of those processes. Please see further guidance here [REUL 2007/275 art 2 \(c\)](#) and here [point 7 of Annex 1 to REUL 853/2004](#). Please note this is not a comprehensive list of processing activities. For more information on **appropriate/suitable packaging** for products [link here](#).





Decision Tree 2: Is your composite product exempt from or subject to official controls at border control posts?

Note: An importer must follow the decision tree from beginning to end to understand the full import requirements for their product.



This decision tree is for information only and has no legal value. Always check the legislation carefully before you import a product and if still unsure, check with the Port Health Authority or Local Authority at the port of entry you will be using.





Under Article 6 of retained EU Decision 2007/275

Exempt composite products must meet all of the following:

- Contain **less than 50%** of any processed product of animal origin (POAO) - to note if the addition of all the processed POAOs in the final product is 50% or more they are not excluded from checks.
- **shelf-stable at ambient temperature or cooked** / have clearly undergone in their manufacture a complete cooking or heating process throughout their substance, so that any raw product is denatured.
- **labelled for human consumption.**
- **securely packaged or sealed in clean containers.**
- accompanied by **a commercial document** and labelled in English, to give information on the nature, quantity and number of packages of the composite products, the country of origin, the manufacturer, and the ingredients.
- Any milk product included in any composite products, including products listed in Annex II shall only be derived from, and treated as provided for, countries listed in Annex I to Commission Regulation (EU) No 605/2010 (or updates to it).

List of approved countries:

- [EU and EFTA countries approved to export animals and animal products to Great Britain](#)
- [Non-EU countries approved to export animals and animal products to Great Britain](#)

Guidance:

- [Import composite products from the EU to Great Britain - GOV.UK](#)
- <https://www.food.gov.uk/business-guidance/importing-composite-products>





Annex II: List of composite products not subject to official controls as referred to in point (b) of Article 6(1)

The table on the next page sets out a list of composite products according to the goods nomenclature in use in the Union that do not need to be submitted to official controls at a border control post.

Notes relating to the table: Column (1) — CN code This column indicates the CN code. The CN, established by Regulation (EEC) No 2658/87, is based on the international Harmonised Commodity Description and Coding System (HS) drawn up by the Customs Cooperation Council, now the World Customs Organisation (WCO), adopted by the International Convention, concluded in Brussels on 14 June 1983 and approved on behalf of the European Economic Community by Decision 87/369/EEC ('the HS Convention').

The CN reproduces the headings and subheadings of the HS to six digits, with only the seventh and eighth figures creating further subheadings which are specific to it. 23 Where a four-digit code is used: unless otherwise specified, all composite products prefixed with or covered by these four digits are not required to be submitted to official controls at a border control post.

Where only certain specified products under any four, six or eight digit code contain animal products and no specific subdivision under this code exists in the CN, the code is marked ex (for example, ex 2001 90 65: veterinary checks not required for the products outlined in Column (2)).

Column (2) — Explanation This column gives details of the composite products covered by the derogation from official controls at border control posts. When necessary, official staff at border control posts must assess the ingredients of a composite product and specify, if the animal product contained in the composite product is sufficiently processed so as to not require the official checks provided for in Union legislation.



CN Codes	Explanations
1)	(2)
1704, 1806 20, 1806 31, 1806 32, 1806 90 11, 1806 90 19, 1806 90 31, 1806 90 39, 1806 90 50	Confectionery (including sweets) and chocolate, containing less than 50 % of processed dairy and egg products and treated as provided for in Article 6(1)(a) of this Decision.
1902 19, 1902 30, 1902 40	Pasta and noodles not mixed or filled with processed meat product; containing less than 50 % of processed dairy and egg products and treated as provided for in Article 6(1)(a) of this Decision.
1905 10, 1905 20, 1905 31, 1905 32, 1905 40, 1905 40 10, 1905 90 10, 1905 90 20, 1905 90 30, 1905 90 45, 1905 90 55, 1905 90 60, ex 1905 90 90;	Bread, cakes, biscuits, waffles and wafers, rusks, toasted bread and similar toasted products; containing less than 20 % of processed dairy and egg products and treated as provided for in Article 6(1)(a) of this Decision. 1905 90 covers only dry and brittle products.
ex 2001 90 65, ex 2005 70 00 ex 16 04	Olives stuffed with less than 20 % fish. Olives stuffed with more than 20 % fish
ex 2104 10 and ex 2104 20	Soup stocks and flavourings packaged for the final consumer, containing less than 50 % of fish oils, fish powders or fish extracts and treated as provided for in Article 6(1)(a) of this Decision
ex 2106 10, ex 2106 90	Food supplements packaged for the final consumer, containing small amounts (in total less than 20 %) of processed animal products (including glucosamine, chondroitin and/or chitosan) other than meat products.

Annex II: Table of composite products not subject to official controls as referred to in point (b) of Article 6(1)

